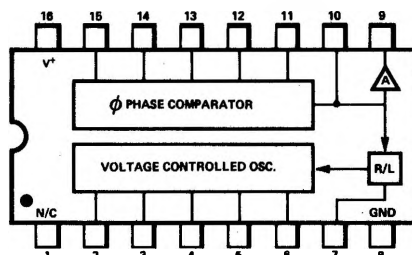


LINEAR INTEGRATED CIRCUITS

PIN CONFIGURATION

**B PACKAGE
(Top View)**



- | | |
|---|---|
| 1. No Connection | 9. Demodulated FM Output
(an open emitter) |
| 2. VCO Timing Capacitor | 10. De-emphasis terminal
(Audio bandshaping) |
| 3. VCO Timing Capacitor | 11. Offset Adjustment |
| 4. VCO Output #2 | 12. FM/RF Input #1 |
| 5. VCO Output #1 | 13. FM/RF Input #2 |
| 6. Fine Tuning | 14. Low Pass Loop Filter |
| 7. Range Control | 15. Low Pass Loop Filter |
| 8. Ground (or Negative
Power Supply) | 16. Positive Power Supply |

ORDER PART NO. NE5608

DESCRIPTION

The NE5608 Phase Locked Loop (PLL) is a monolithic signal conditioner, and demodulator system comprising a VCO, Phase Comparator, Amplifier and Low Pass Filter, interconnected as shown in the accompanying block diagram. The center frequency of the PLL is determined by the free running frequency (f_0) of the VCO. This VCO frequency is set by an external capacitor and can be fine tuned by an optional Potentiometer. The low pass filter, which determines the capture characteristics of the loop, is formed by the two capacitors and two resistors at the Phase Comparator output.

The PLL system has a set of self biased inputs which can be utilized in either a differential or single ended mode. The VCO output, in differential form, is available for signal conditioning frequency synchronization, multiplication and division applications. Terminals are provided for optional extended control of the tracking range, VCO frequency, and output DC level.

The monolithic signal conditioner-demodulator system is useful over a wide range of frequencies from less than 1 Hz to more than 15 MHz with an adjustable tracking range of $\pm 1\%$ to $\pm 15\%$.

- FM DEMODULATION WITHOUT TUNED CIRCUITS
- NARROW BANDPASS - TO $\pm 1\%$ ADJUSTABLE
- TRACKING RANGE
- EXACT FREQUENCY DUPLICATION IN HIGH
- NOISE ENVIRONMENT
- WIDE TRACKING RANGE $\pm 15\%$
- HIGH LINEARITY - 1% DISTORTION MAX
- FREQUENCY MULTIPLICATION AND DIVISION
- THROUGH HARMONIC LOCKING

TONE DECODERS

FM IF STRIPS

TELEMETRY DECODERS

DATA SYNCHRONIZERS

SIGNAL RECONSTITUTION

SIGNAL GENERATORS

MODEMS

TRACKING FILTERS

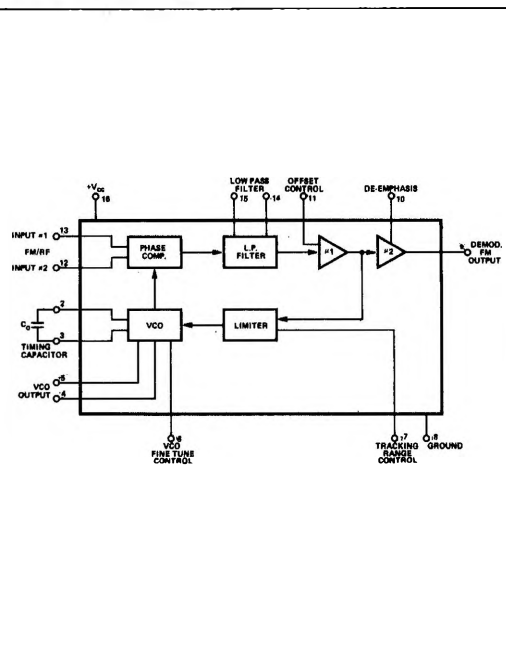
SCA RECEIVERS

FSK RECEIVERS

WIDE BAND HIGH LINEARITY DETECTORS

Maximum Operating Voltage	26V
Input Voltage	1V Rms
Storage Temperature	-65°C to 150°C
Operating Temperature	0°C to 70°C
Power Dissipation	300 mw

Limiting values above which serviceability may be impaired



GENERAL ELECTRICAL CHARACTERISTICS

(15K Ω Pin 9 to GND, Input Pin 12 or Pin 13 AC Ground Unused Input, Optional Controls Not Connected, V+ = 18V Unless Otherwise Specified T_A = 25°C)

CHARACTERISTICS	LIMITS				TEST CONDITIONS
	MIN	TYP	MAX	UNITS	
Lowest Practical Operating Frequency		0.1		Hz	Measured at 2 MHz, with both inputs AC grounded Measured at 2 MHz
Maximum Operating Frequency	15	30		MHz	
Supply Current	7	9	11	Ma	
Minimum Input Signal for Lock		100		μ V	
Dynamic Range		60		dB	
VCO Temp Coefficient*		± 0.06	± 0.12	%/°C	
VCO Supply Voltage Regulation		± 0.3	± 2	%/V	
Input Resistance		2		K Ω	
Input Capacitance		4		Pf	
Input DC Level		+4		V	
Output DC Level	+12	+14	+16	V	Measured at Pin 9 See Figure 1
Available Output Swing		4		V _{p-p}	
AM Rejection*	30	40		dB	
De-emphasis Resistance		8		K Ω	

*ACC Test Sub Group C.

ELECTRICAL CHARACTERISTICS (For FM Applications, Figure 2) (15K Ω Pin 9 to GND, Input Pin 12 or 13, AC Ground Unused Input, Optional Controls Not Connected, V+ = 18V Unless Otherwise Specified T_A = 25°C)

CHARACTERISTICS	LIMITS				TEST CONDITIONS
	MIN	TYP	MAX	UNITS	
10.7 MHz Operation Deviation 75 kHz Source Impedance = 50Ω					
Detection Threshold	30	120	300	μV	V _{in} = 1 mv Rms Modulation Frequency 1 kHz V _{in} = 1 mv Rms Modulation Frequency 1 kHz V _{in} = 1 mv Rms Modulation Frequency 1 kHz
Demodulated Output Amplitude		60		mV	
Distortion *		.3	1	% T.H.D.	
Signal to Noise Ratio $\frac{S+N}{N}$		35		dB	
4.5 MHz Operation Deviation = 25 kHz, Source Impedance = 50Ω					
Detection Threshold	30	120	300	μV	V _{in} = 1 mv Rms Modulation Frequency 1 kHz V _{in} = 1 mv Rms Modulation Frequency 1 kHz V _{in} = 1 mv Rms Modulation Frequency 1 kHz
Demodulated Output Amplitude		60		mV	
Distortion		0.3	1.0	% T.H.D.	
Signal to Noise Ratio $\frac{S+N}{N}$		35		dB	
Wide Deviation ΔF/f _o = 5% Input = 4.5 MHz Deviation = 225 kHz @ 1 kHz Modulation Rate					
Detection Threshold	0.2	1	5	mV	V _{in} = 5 mv Rms V _{in} = 5 mv Rms V _{in} = 5 mv Rms
Demodulated Output		0.5		V _{rms}	
Distortion		0.8		% T.H.D.	
Signal to Noise Ratio $\frac{S+N}{N}$		50		dB	

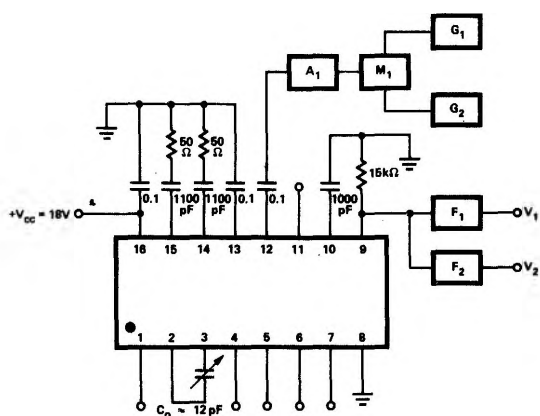
*ACC Test Sub Group C.

ELECTRICAL CHARACTERISTICS (For Tracking Filter, Figure 3) (15K Ω Pin 9 to GND, Input Pin 12 or Pin 13 AC Ground Unused Input, Optional Controls Not Connected, V+ = 18V Unless Otherwise Specified T_A = 25°C)

CHARACTERISTICS	LIMITS				TEST CONDITIONS
	MIN	TYP	MAX	UNITS	
Tracking Range	± 5	± 15		% of f _o	V _{in} = 5 mv Rms Input 2 MHz - See Characteristic Curves
Minimum Signal to Sustain Lock 0°C to 70°C		0.8		mv Rms	
VCO Output Impedance		1		k Ω	Input 2 MHz Measured with high impedance Probe with less than 10 Pf Capacitance
VCO Output Swing	0.4	0.6		V _{p-p}	
VCO Output DC Level		+6.5		V	Input 2 MHz with ± 100 kHz Side Band Separation and 3 kHz Low Pass Filter Input 1 mv Peak for Carrier Each Side Band C ₁ = 0.01 μ F R ₁ = 0
Side Band Suppression		35		dB	

SYNOPSIS

AM REJECTION



G_1 = FM Generator with $f_c = f_o \approx 4 \text{ MHz}$
 $\Delta f = 40 \text{ kHz},$
 $f_{\text{mod}} = 1 \text{ kHz}$

G₂ = Audio Generator with $f_A = 400$ Hz

M_1 = Balanced Modulator Carrier Supplied by G_1 , AM modulation provided by G_2 .

A_1 = 50 Ω attenuator pad with signal level into pin 12 adjusted to 1 mV rms.

$F_1 = 1 \text{ kHz}$ Bandpass filter, $Q = 20$

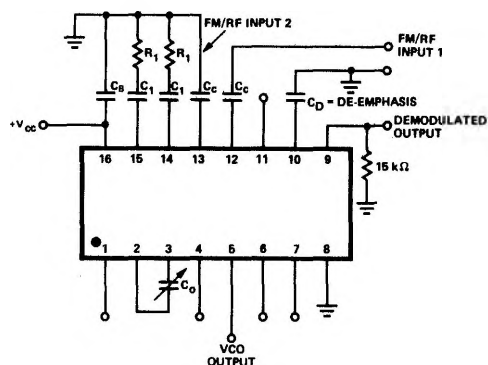
F_2 = 400 Hz Bandpass filter with Q = 50, with 1 kHz trap.

$$AMR = \frac{V_1}{V_2} \ln \text{ dB}$$

V_1 and V_2 are rms voltmeter readings.

Fig. 1

FM DEMODULATION

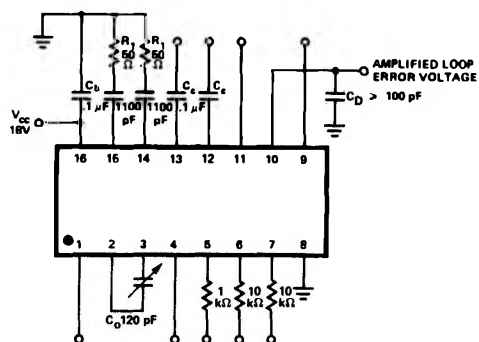


- C_B** = Bypass Capacitor
- C_C** = Coupling Capacitors
- C₁** = Low Pass Filter Capacitors
- C_D** = Frequency Determining Capacitor

T_D = De-emphasis time constant
 $= (C_D) (8k\Omega)$

Fig. 2

TRACKING FILTER

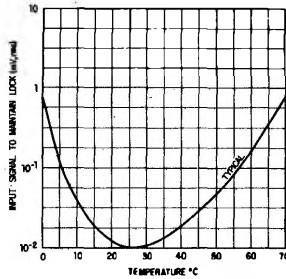


C_C = Coupling Capacitors
C_B = Bypass Capacitor
C₁ = Low Pass Filter Capacitor
C₁₂ = VCO Frequency Set Capacitor

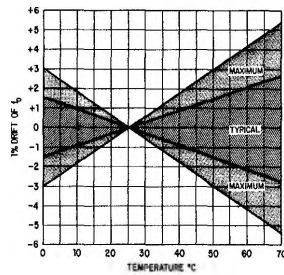
Fig. 3

TYPICAL CHARACTERISTIC CURVES

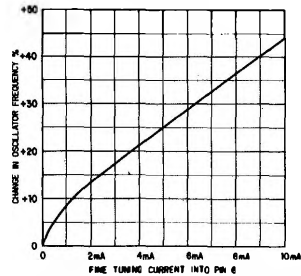
**MINIMUM INPUT SIGNAL AMPLITUDE
NECESSARY TO MAINTAIN LOCK AS A
FUNCTION OF TEMPERATURE WITH f_{signal}
 $= f_{025^{\circ}\text{C}} = 2.0 \text{ MHz}$**



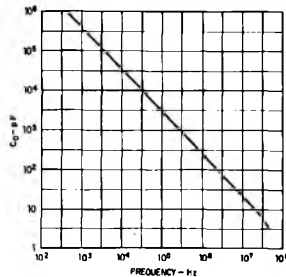
**THERMAL DRIFT OF VCO FREE RUNNING
FREQUENCY (f_0)**



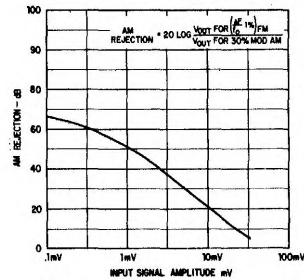
**CHANGE OF FREE RUNNING OSCILLATOR
FREQUENCY AS A FUNCTION OF FINE
TUNING CIRCUIT**



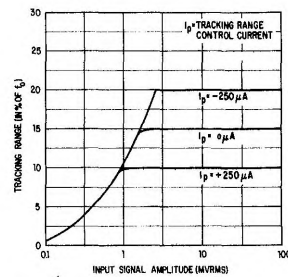
**FREE RUNNING OSCILLATOR FREQUENCY
AS A FUNCTION OF VCO TIMING CAPACITANCE**



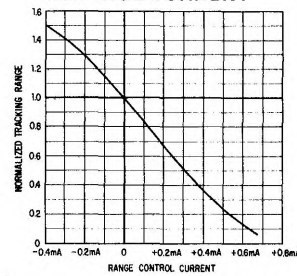
**AM REJECTION AS A FUNCTION OF INPUT
SIGNAL LEVEL $f_0 = 10 \text{ MHz}$**



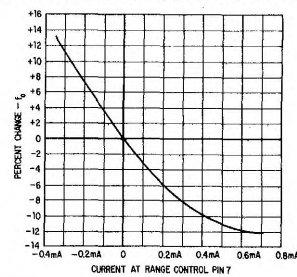
**TYPICAL TRACKING RANGE AS A FUNCTION
OF INPUT SIGNAL**



**CHANGE OF FREE RUNNING OSCILLATOR
FREQUENCY AS A FUNCTION OF RANGE
CONTROL CURRENT**



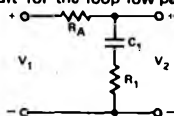
**NORMALIZED TRACKING RANGE AS A
FUNCTION OF RANGE CONTROL CURRENT**



EXTERNAL CONTROLS

1. Loop Low Pass Filter (Pins 14 and 15)

The equivalent circuit for the loop low-pass filter can be represented as:



where R_A ($6K \Omega$) is the effective resistance seen looking into Pin #14 or Pin #15.

The corresponding filter transfer characteristics are:

$$\frac{V_2}{V_1}(S) = (S) = \frac{1 + S R_1 C_1}{1 + S (R_1 + R_A) C_1}$$

where S is the complex frequency variable.

2. Loop Gain (Threshold) Control

The overall Phase Locked Loop gain can be reduced by connecting a feedback resistor, R_F , across the low-pass filter terminals, Pins #14 and #15. This causes the loop gain and the detection sensitivity to decrease by a factor Q ($Q < 1$)

where:

$$Q = \frac{R_F}{2 R_A + R_F}$$

Reduction of loop gain may be desirable at high input signal levels ($V_{in} > 30 \text{ mV}$) and at high frequencies ($f_D > 5 \text{ MHz}$) where excessively high loop gain may cause instability.

3. Tracking Range Control (Pin 7)

Any bias current, I_P , injected into the tracking range control, reduces the tracking range of the PLL by decreasing the output of the limiter. The variation of the tracking range and the center frequency, as a function of I_P , are shown in the characteristic curves with I_P defined positive going into the tracking range control terminal. This terminal is normally at a DC level of +0.6 Volts and presents an impedance of 600Ω .

4. External Fine Tuning (Pin 6)

Any bias current injected into the fine tuning terminal increases the frequency of oscillation, f_O , as shown in the characteristic curves. This current is defined Positive into the fine tuning terminal. This terminal is at a typical DC level of +1.3 Volts and has a dynamic impedance of 100Ω to ground.

5. Offset Adjustment (Pin 11)

Application of a bias voltage to the offset adjustment terminal modifies the current in the output amplifier setting the DC level at the output. The effect on the loop is to modify the relationship between the VCO free running frequency and the lock range, allowing the VCO free running frequency to be positioned at different points throughout the lock range.

Nominally this terminal is at +4V DC and has an input impedance of $3K \Omega$. The offset adjustment is optional. The characteristics specified correspond to operation of the circuit with this terminal open circuited.

6. De-emphasis Filter (Pin 10)

The de-emphasis terminal is normally used when the PLL is used to demodulate Frequency Modulated Audio signals. In this application, a capacitor from this terminal to ground provides the required de-emphasis. For other applications, this terminal may be used for band shaping the output signal. The 3 dB bandwidth of the output amplifier in the system block diagram (see Figure 2.) is related to the de-emphasis capacitor, C_D , as:

$$f_{3dB} = \frac{1}{2 R_D C_D}$$

where R_D is the 8000 ohm resistance seen looking into the de-emphasis terminal.

When the PLL system is utilized for signal conditioning, and the loop error voltage is not utilized, de-emphasis terminal should be AC grounded.